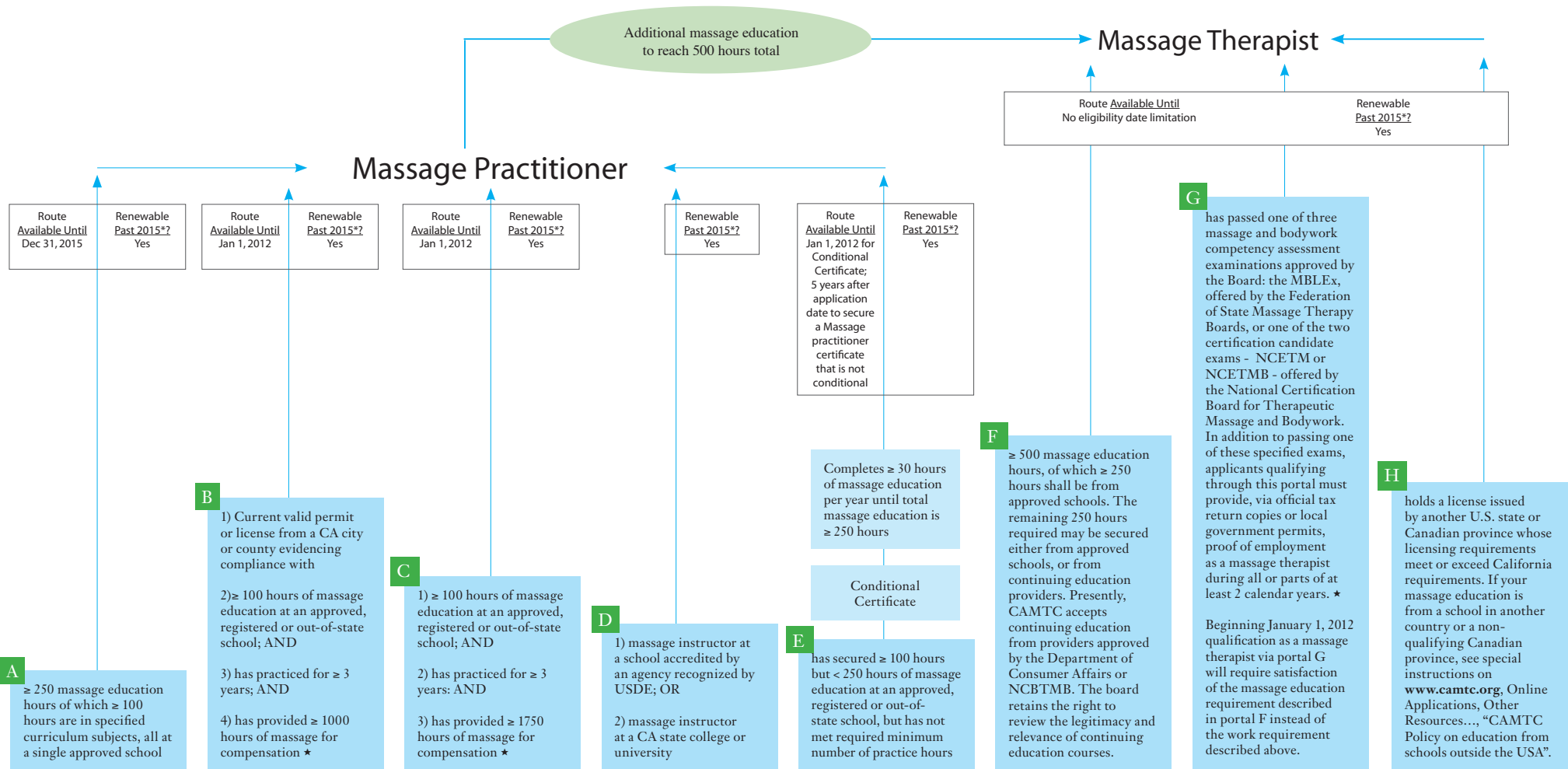


Overview of Pathways to CAMTC Certification



* Assumes CAMTC, during sunset review, secures ability to continue operating past December 31, 2015.

★ Individuals evidencing massage therapy employment by tax returns must **both** include photocopies of their complete filed tax returns for the two years **and** file Form 4506-T with the IRS requesting that copies of summary IRS return data for those two years be sent to CAMTC.

This chart reflects CAMTC Board decisions as of September 22, 2010.

The information in this schematic representation provides general information about routes to CAMTC certification through eight different portals. Final decisions as to qualification are made based on detailed information in each application.